



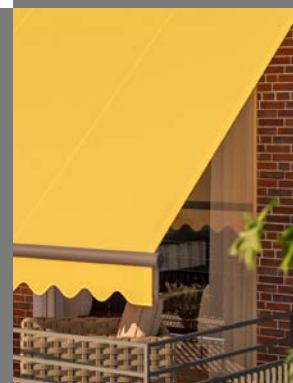
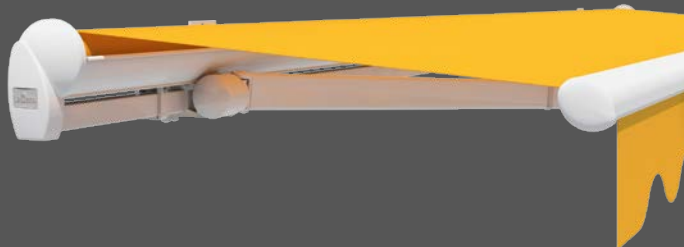
Folding-arm  
awning



Family  
Classic

Just  
*enjoy life!*

**Lewens**  
MARKISEN



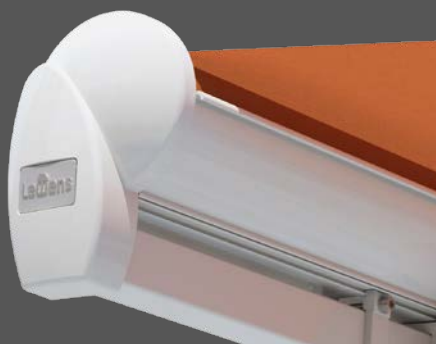


*Vario Valance (Option)*

*The Vario Valance offers variable shade from the sun and glare protection, especially when the sun is low in the sky, without any loss of headroom under the awning.*

## Family Classic – the classic awning

Versatile and practical for patios and outdoor seating areas



### Open type

*On the basic Family Classic type, the awning fabric roller is exposed ("open"). Round end caps at the sides and the fabric cover shell on the front of the fabric roller lend the awning a harmonious appearance.*



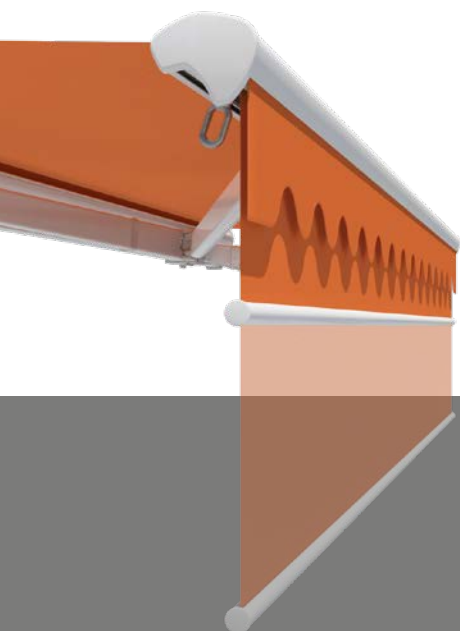
## A host of extra features

- Width of 1 unit max. 700 cm, joined system max. 1950 cm, drop max. 400 cm
- Supplied as standard with classic valance
- Electric motor
- Options:  
Radio motor/  
radio remote control,  
automatic weather sensor,  
LED lighting,  
radiant heater,  
support legs,  
Vario Valance,  
Lewens-Matik



### **Lewens-Matik** (Option)

*An additional crank gear mechanism permits smooth adjustment of the awning pitch to adapt it to the position of the sun.*



The Family Classic folding arm awning with its typical valance creates a summer-like atmosphere on the patio or balcony. Available in formats up to 700 cm (as a single unit) and up to 1950 cm as a joined system, this awning is perfect even for large areas. A user-friendly awning boasting proven Lewens' quality, the Family Classic can be enhanced by a number of interesting options.

## Rain Cover type

*The protective cover on the Family Classic Rain Cover type protects the awning against dust, rain and other effects of the weather when retracted.*



## Encased type

*Equipped with a protective cover and back plate, the Encased type of the Family Classic provides secure all-round protection for the fabric roller.*

# Family Classic

Equipment and technical features



Manufactured and assembled in Germany  
TÜV-tested safety  
Quality and technology CE-compliant



Type	Open	Rain Cover	Encased
Back bar awning – standard dimensions, retracted (H x D)	182 x 200 mm	178 x 200 mm	178 x 200 mm
<b>Widths (max.)</b>			
1 unit (single panel)	700 cm	700 cm	700 cm
2 units (linked system with continuous awning)	1.200 cm	–	–
2 units/3 units (linked system with slit cover)	1.300 cm/1.950 cm	1.300 cm/1.950 cm	1.300 cm/1.950 cm
<b>Drops</b>			
Arm lengths 150 / 200 / 250 / 300 / 350 / 400 cm	■	■	■
Special arm lengths	□	□	□
<b>Drive</b>			
Electric motor (for wall switch)	■	■	■
Radio motor (io or RTS)	□	□	□
Crank drive	□	□	□
<b>Frame colours</b>			
17 RAL colours and 6 textured finishes (Lewens standard colours)	■	■	■
Natural silver (E6/EV 1 anodized, small components RAL 9006)	■	■	■
Special RAL, special colours and effect finishes	□	□	□
<b>Awning fabrics from the LEWENS collection</b>			
Branded acrylic (spun-dyed, ultra fade resistant)	■	■	■
Branded polyester (spun-dyed, ultra fade resistant)	□	□	□
Tenara quality sewing yarn	■	■	■
Ultrasonic seam welding	□	□	□
<b>Valance</b>			
without valance	–	–	–
with valance	■	■	■
<b>Options</b>			
1   Radio motor + radio remote control (io or RTS)	□	□	□
2   Automatic weather sensor (sun, wind, rain)	□	□	□
3   Lighting: LED spot bar	□	□	□
4   Radiant heater (not with 6, 7; with 3 only wall attachment)	□	□	□
5   Support legs (not with 2, 7)	□	□	□
6   Vario Valance (not with 4, 7)	□	□	□
7   Lewens-Matik, up to max. 600 x 350 cm (not with 3, 4, 5, 6)	□	□	□
<b>Attachment</b>			
Wall	■	■	■
Ceiling/Rafters	□	□	□

■ Standard □ Option – not available

Possible dimensions and restrictions along with the complete range of electronic accessories can be found in the technical data in the current Lewens price list.

Your stockist will be happy to advise you:



www.lewens-markisen.de



**IDÉ-SIGN**  
SKILTE OG SOLAFSKÆRMNING

Telf. 6310 5058  
info@ide-sign.dk

Subject to technical alterations. Date: 08/2019